

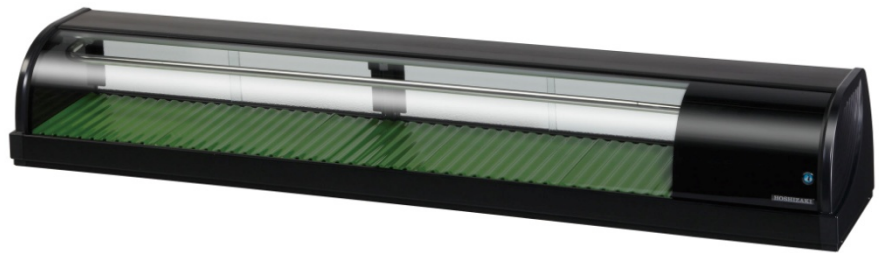


HOSHIZAKI

SUSHI CABINETS

HNC-180BE-R-B

Counter Showcase



Product Features

- Attractive top glass angles down
- Plate space on top of unit - 5.6 inches
- Stable humidity and temperature levels are maintained instead of forced air circulation methods that dry out and ruin displayed sushi
- Large diameter 1 inch drains at front
- Larger front to back interior - 11 inches
- Interior floor has a radius at all four sides
- Self-contained refrigeration unit - easy to install
- Left and right side compression location options available
- Condenser airflow is in the back and out the side
- Large diameter upper evaporator with tin plating
- Larger condenser face area improves cooling performance
- Solid base food plates with radius groove to fit sushi foods
- Base food plates can be turned upside down and used to improve cooling performance
- R-134a Refrigerant
- Exterior consists of clear glass, ABS Plastic, PVC Plastic and Stainless Steel
- Interior consists of clear glass, ABS Plastic and Stainless Steel





Product Specifications

- **Exterior Dimensions**

Width: 1800mm
Depth: 345mm
Height: 270mm

- **Interior Dimensions**

Width: 1445mm
Depth: 288mm (floor)
Height: 157mm

- **Weight**

Net: 47kg
Packed: 60kg

- **AC Supply Voltage**

220-240V/50Hz, 10AMPs

- **Rated Amperage**

1.1A

- **Saturation Temperature**

Approx 4°C (Ambient temp 27°C, no load)

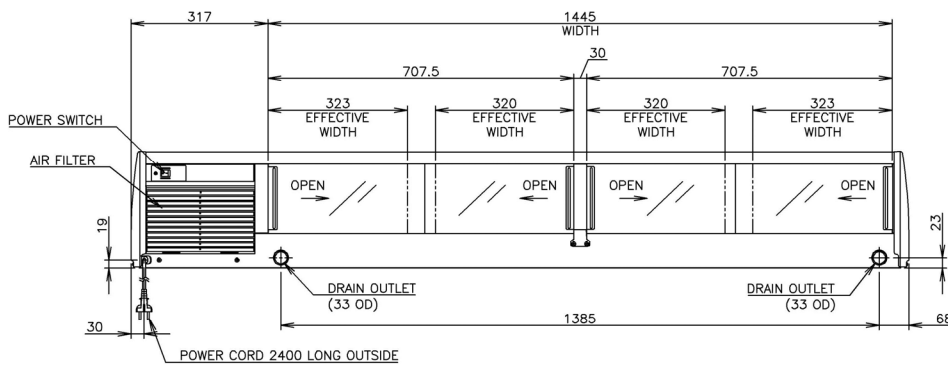
- **Net Capacity** 72L

- **Ambient Temperature**

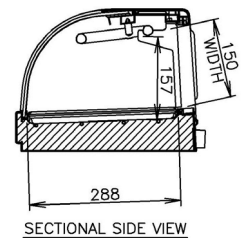
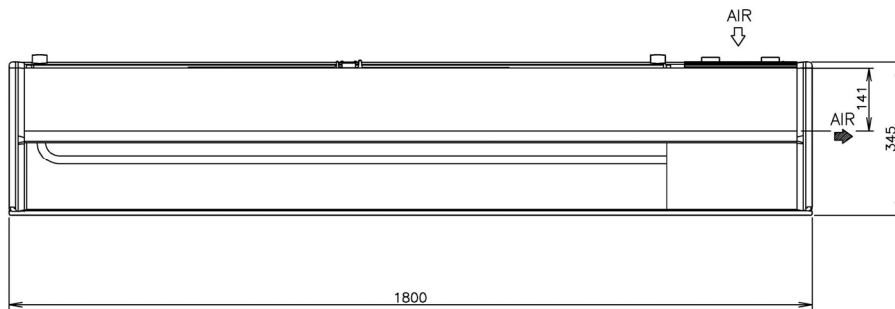
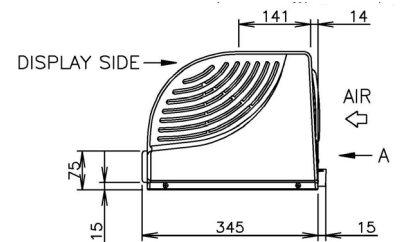
10°C – 30°C

- **Refrigeration System**

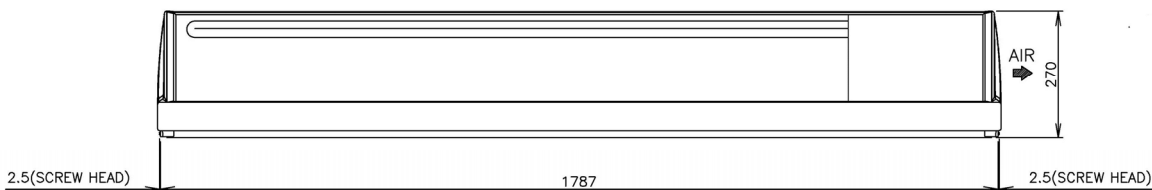
Convection Cooling



VIEW A(REAR)



SECTIONAL SIDE VIEW



(DISPLAY SIDE)

