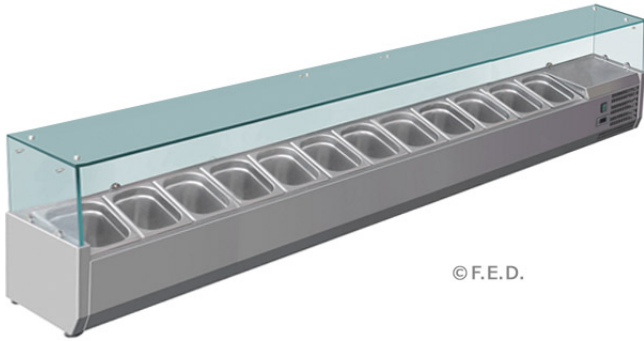


VRX2500/380 DELUXE PREP TOP

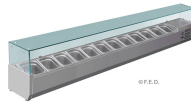
VRX2500/380

12 x 1/3 GN pans*

2500 mm wide



© F.E.D.



© F.E.D.

Product description

12 x 1/3 GN pans*

2500 mm wide

Stainless Steel interior & exterior

- 2 to 8°C
- Zanussi compressors
- German ËBM-Pabst fans
- Dixell digital temp. control & readout
- angled pan* positions
- maximum pan depth: 150mm
- Ambient 43°C & 75% RH
- Height: 440 mm including 240 mm base

* pans not included

Tops are holding units & product needs to be pre-chilled to less than 5°C before filling

Specifications

Net Weight (Kg)	0
Width (mm)	2500
Depth (mm)	395
Height (mm)	440
Power	240V; 150W
